



Beautiful Made Easy



Luxury Vinyl Plank

1.5 mm & 2.0 mm

About

Luxury Vinyl Plank

Luxury Vinyl Plank (LVP) Flooring combines the sophistication of natural wood look with the durability of modern materials. Designed for style and resilience, LVP is perfect for transforming any space into a haven of elegance and practicality.

Key Features:

Authentic Look: Realistic wood textures and a variety of finishes to suit every decor.

Durable & Scratch-Resistant: Withstands daily wear and tear, ideal for home & offices.

Easy Installation: Glue-down installation process for seamless and hassle-free setup.

Low Maintenance: Simple to clean, keeping it looking new for years.



PF-102 | HIMALAYAN ELM

Size : 6" x 36" x 1.5 mm | Qty : 24 pcs / Carton | Coverage : 36 sqft



PF-110 | BUTTERNUT

Size : 6" x 36" x 1.5 mm | Qty : 24 pcs / Carton | Coverage : 36 sqft



PF-111 | GOLDEN PECAN

Size : 6" x 36" x 1.5 mm | Qty : 24 pcs / Carton | Coverage : 36 sqft



PF-201 | COCOA

Size : 6" x 36" x 1.5 mm | Qty : 24 pcs / Carton | Coverage : 36 sqft



PF-202 | BAREWOOD

Size : 6" x 36" x 1.5 mm | Qty : 24 pcs / Carton | Coverage : 36 sqft



PF-205 | CLASSIC GREY

Size : 6" x 36" x 1.5 mm | Qty : 24 pcs / Carton | Coverage : 36 sqft



PF-206 | LATTE

Size : 6" x 36" x 1.5 mm | Qty : 24 pcs / Carton | Coverage : 36 sqft



PF-104 | PERUVIAN WALNUT

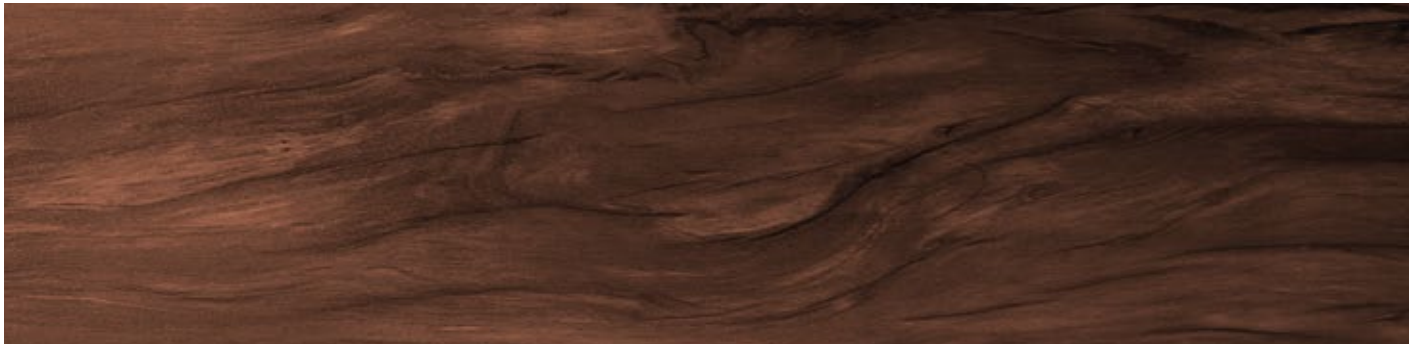


PF-106 | SPANISH CEDAR



PF-107 | COCOBOLO

Size : 6" x 36" x 1.5 mm | Qty : 24 pcs / Carton | Coverage : 36 sqft



PF-108 | RAW HICKORY



PF-109 | WEST INDIAN ELM



PF-203 | ANTIQUE BROWN

Size : 6" x 36" x 1.5 mm | Qty : 24 pcs / Carton | Coverage : 36 sqft



PF-209 | PENNY

Size : 6" x 36" x 1.5 mm | Qty : 24 pcs / Carton | Coverage : 36 sqft



PF-210 | CHARCOAL

Size : 6" x 36" x 1.5 mm | Qty : 24 pcs / Carton | Coverage : 36 sqft



PF-211 | TWANY

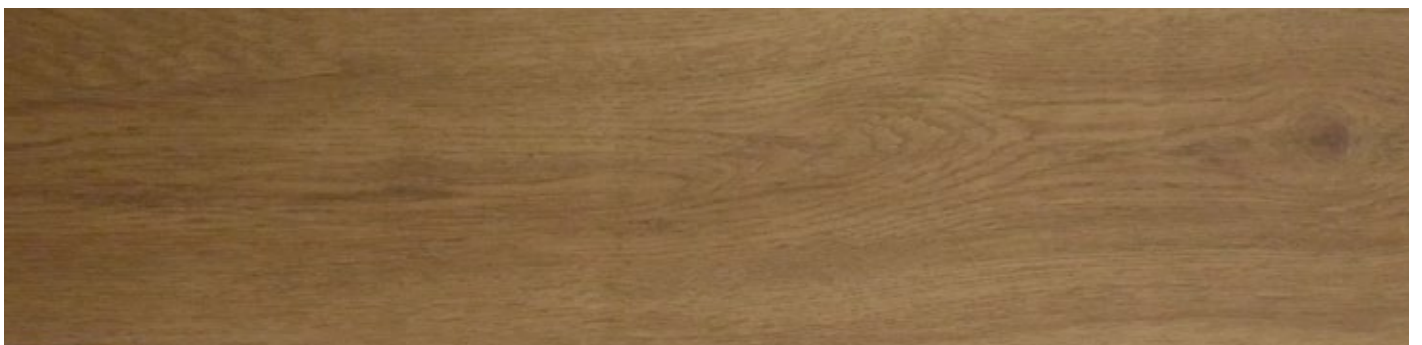
Size : 6" x 36" x 1.5 mm | Qty : 24 pcs / Carton | Coverage : 36 sqft



PF-204 | NUTMEG



PF-207 | TORTILLA



PF-208 | PEANUT

Size : 6" x 36" x 1.5 mm | Qty : 24 pcs / Carton | Coverage : 36 sqft



PF-301 | HAZE

Size : 6" x 36" x 2.0 mm | Qty : 24 pcs / Carton | Coverage : 36 sqft



PF-302 | NATURAL WHEATROSE

Size : 6" x 36" x 2.0 mm | Qty : 24 pcs / Carton | Coverage : 36 sqft



PF-304 | SOFTWOOD CONIFERS

Size : 6" x 36" x 2.0 mm | Qty : 24 pcs / Carton | Coverage : 36 sqft



PF-306 | GINGERBREAD

Size : 6" x 36" x 2.0 mm | Qty : 24 pcs / Carton | Coverage : 36 sqft



PF-307 | WHITEWOOD

Size : 6" x 36" x 2.0 mm | Qty : 24 pcs / Carton | Coverage : 36 sqft



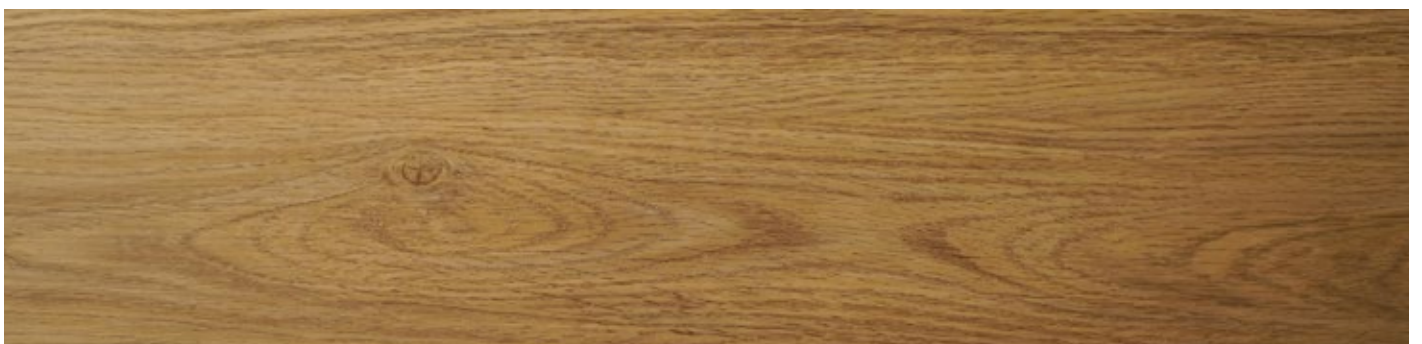
PF-113 | MORUS ALBA



PF-114 | HEMLOCK



PF-119 | SPRUCE FIR



PF-120 | ENGLISH SYCAMORE

Size : 6" x 36" x 2.0 mm | Qty : 24 pcs / Carton | Coverage : 36 sqft

All the images are from actual photoshoot. Color may vary depending upon your screen resolution.



PF-308 | SAND DUNE

Size : 6" x 36" x 2.0 mm | Qty : 24 pcs / Carton | Coverage : 36 sqft



PF-309 | JACOBEBAN

Size : 6" x 36" x 2.0 mm | Qty : 24 pcs / Carton | Coverage : 36 sqft



PF-310 | POPLAR

Size : 6" x 36" x 2.0 mm | Qty : 24 pcs / Carton | Coverage : 36 sqft

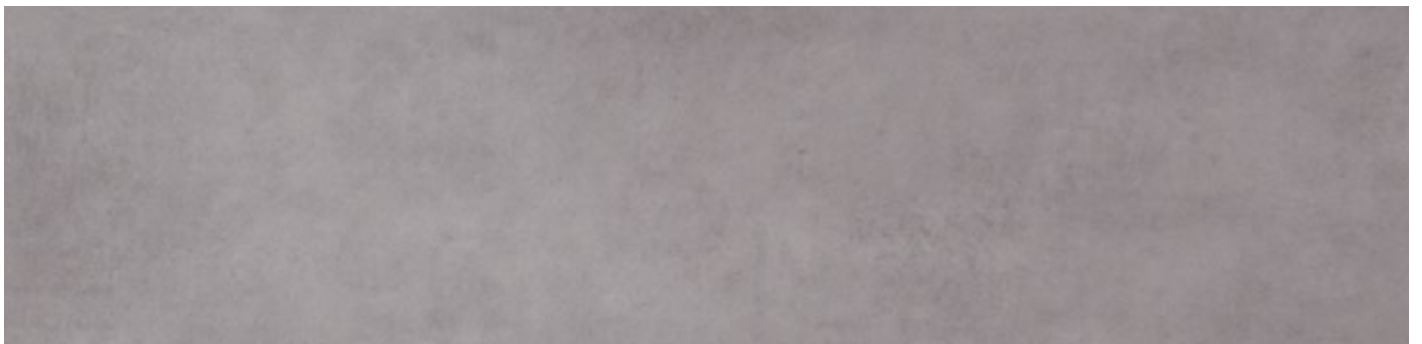


PF-303 | CYPRUS PINE



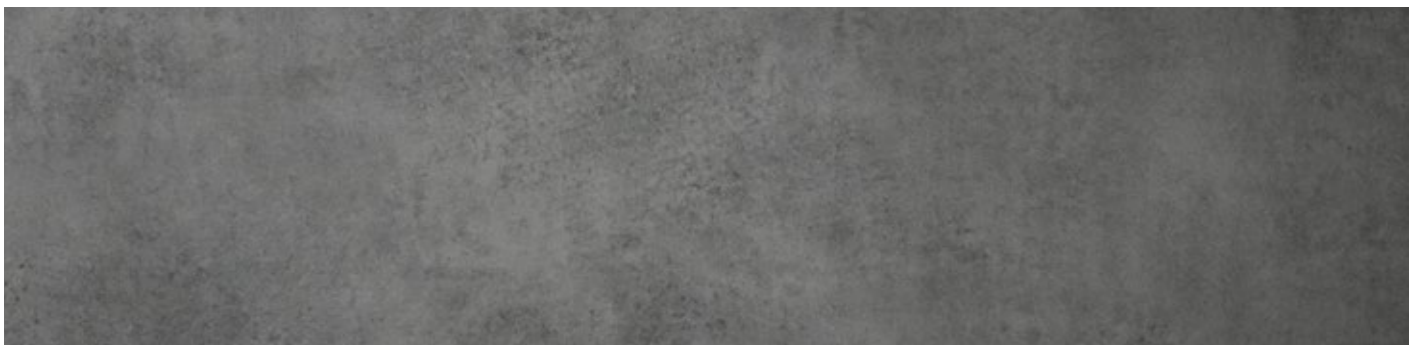
PF-311 | PINE

STONE
SERIES



PF-312 | FROSTED ASH

STONE
SERIES





PF-313 | GRAPHITE

STONE
SERIES

Size : 9" x 36" x 2.0 mm | Qty : 20 pcs / Carton | Coverage : 45 sqft

All the images are from actual photoshoot. Color may vary depending upon your screen resolution.

DESCRIPTION			
Total Thickness	EN428	mm	1.5mm
Thickness of Wear layer	EN429	mm	0.1
Weight	EN430	g/m ²	2741
Plank Size	EN427	inch	6x36
Number of floor per package	-	-	24 PCS
CLASSIFICATION			
Norm / Product specification	-	-	EN 649
European classification	EN 685	class	34 - 43
Fire rating	EN 13 501-1	class	Bf-1
Static electrical propensity	EN 1815	kv	< 2.0
Slip resistance wet: ramp test with oil	DIN 51 130	class	R10
PERFORMANCE			
Wear resistance	EN 660.2	mm ³	≤2.0
Wear group	EN 649	-	T
Dimensional stability	EN 434	%	≤0.15
Residual indentation	EN 433	mm	0.10
Thermal conductivity	EN 12524	W/(m.K)	0.21
Sound Reduction	DIN 52210	db	4.00
Color fastness	EN 20 105 - B02	degree	≥6
Chemical products resistance	EN 423	-	Pass
Surface treatment	-	-	UV
CE MARKING			
		EN 14041 : 2004	

DESCRIPTION			
Total Thickness	EN428	mm	2.0mm
Thickness of Wear layer	EN429	mm	0.2
Weight	EN430	g/m ²	3659
Plank Size	EN427	inch	6x36
Number of floor per package	-	-	24 PCS
CLASSIFICATION			
Norm / Product specification	-	-	EN 649
European classification	EN 685	class	34 - 43
Fire rating	EN 13 501-1	class	Bf-1
Static electrical propensity	EN 1815	kv	< 2.0
Slip resistance wet: ramp test with oil	DIN 51 130	class	R10
PERFORMANCE			
Wear resistance	EN 660.2	mm ³	≤2.0
Wear group	EN 649	-	T
Dimensional stability	EN 434	%	≤0.15
Residual indentation	EN 433	mm	0.10
Thermal conductivity	EN 12524	W/(m.K)	0.21
Sound Reduction	DIN 52210	db	4.00
Color fastness	EN 20 105 - B02	degree	≥6
Chemical products resistance	EN 423	-	Pass
Surface treatment	-	-	UV
CE MARKING			
		EN 14041 : 2004	



www.excelwallpapers.com